


Immanuel Christian School Safeguarding Policy

This policy is reviewed annually to ensure compliance with current regulations

| | |
|---------------------|----------------|
| Amended by | |
| JRG April 2026 | |
| Date of next review | September 2027 |

| | |
|--------------------------------------|---|
| Author/Person Responsible | Jo Gulliford |
| Date of Ratification | 22.01.26 |
| Review Frequency | Annually, or as updates require |
| Review Date | 4th September 2026 |
| Related Policies/ documents | <p>Acceptable Use Agreement; AI Policy; Attendance; Anti-Bullying; Children Missing Education Policy; Code of Conduct; Complaints; Confidentiality; Cyber Security; Data protection; Discipline (Behaviour, including suspensions and exclusions); Educational Visits; Equality; Health and Safety; Low level concerns; Online Safety; Registration; Social, Emotional and Mental Health (SEMH) Policy; Special educational needs and disability; Staff discipline, conduct and grievance (procedures for addressing); Staff recruitment; Statement of procedures for dealing with allegations of abuse against staff Whistle-blowing Youth-produced sexual imagery policy</p> |
| Chair of Governor's Signature |  |

1) Purpose of the Policy

The Bible teaches that all children are precious in the sight of God. Jesus says, “let the little children come to me and do not hinder them, for the kingdom of God belongs to such as these.” Matthew 19vs14

However, we live in a fallen world and as such we have a responsibility to safeguard and promote the welfare of all the children in the school’s care. The school therefore has a responsibility to protect children from things that cause harm.

At Immanuel Christian School we are committed to creating and embedding a culture of vigilance to promote the best interests of children. This:

- Ensures we maintain an attitude of “It could happen here”
- Ensures that our learners and staff are safe and protected
- Ensures that our learners and staff know who to talk to if they have concerns and are assured that their voices are heard
- Ensures that our learners are supported, protected and informed and that staff are following processes to support this
- Ensures that our learners are safe from discrimination and bullying
- Ensures that our learners recognise when they are at risk and know how to get help when they need it including when they are off the school site
- Ensures that our learners understand how to keep themselves safe as part of a broad and balanced PSHE and online safety curriculum
- Focuses on preventative work in relation to trauma and adverse childhood experiences
- Ensuring our process and practices are regularly reviewed to take account of any new risks and or guidance

This policy applies to all staff, pupils (including EYFS), governors, cover staff, contractors and volunteers.

This policy reflects the most recent government guidance, including:

- *Keeping Children Safe in Education (Sept 2025)*;
- *Working Together to Safeguard Children (March 2026)*;
- *Prevent Duty Guidance (2023)*;
- *Relationships Education, Relationships and Sex Education (RSE) and Health Education (2021)*;
- *Working Together to Improve School Attendance (2024)*;
- *Generative AI in education (2025)*;
- *Restrictive Interventions, including the use of reasonable force, in schools (April 2026)*

1.1 Information Sharing

The school’s information sharing policy is based on the guidance document ‘Information sharing: advice for practitioners providing safeguarding services’ (DfE, 2018).

KCSIE 2025, paragraph 55: DPA and UK GDPR **do not** prevent the sharing of information for the purposes of keeping children safe and promoting their welfare. If in any doubt about sharing information, staff should speak to the designated safeguarding lead (or a deputy). Fears about sharing information **must not** be allowed to stand in the way of the need to safeguard and promote the welfare and protect the safety of children.

KCSIE 2025, paragraph 118: Governing bodies and proprietors should ensure relevant staff have due regard to the relevant data protection principles, which allow them to share (and withhold) personal information, as provided for in the Data Protection Act 2018 and the UK GDPR.

This includes:

- being confident of the processing conditions which allow them to store and share information for safeguarding purposes, including information, which is sensitive and personal, and should be treated as 'special category personal data'
- understanding that 'safeguarding of children and individuals at risk' is a process that allows practitioners to share special category personal data. This includes allowing practitioners to share information without consent where there is good reason to do so, and that the sharing of information will enhance the safeguarding of a child in a timely manner. It would be legitimate to share information without consent where: it is not possible to gain consent; it cannot be reasonably expected that a practitioner gains consent; and, if to gain consent would place a child at risk, and
- for schools, not providing pupils' personal data where the serious harm test under the legislation is met, for example, in a situation where a child is in a refuge or another form of emergency accommodation, and the serious harm test is met, they must withhold providing the data in compliance with schools' obligations under the Data Protection Act 2018 and the UK GDPR. Where in doubt schools should seek independent legal advice.

We take seriously our statutory and moral responsibilities to protect and safeguard the welfare of the children and young people in their care - "The welfare of the child is paramount." (Children Act 1989)

We will follow procedures set out by the South Gloucestershire Children's Partnership, which comprises the council, the Integrated Care Board (ICB) and the Police and take account of guidance issued by the DFE and the Local Authority (LA). The school will work under these arrangements as a named partner <http://sites.southglos.gov.uk/safeguarding/children/>

We recognise that staff, because of their contact with and knowledge of children or young people in their care, are well placed to promote the well-being of children, protect them from harm, and respond to child protection or safeguarding concerns.

As part of the ethos of the school, the staff and governors are committed to:

- ensuring the school practises safe recruitment in checking the suitability of staff and volunteers to work with students
- ensuring that all staff and volunteers understand, and adhere to, the school's code of conduct
- ensuring there is a robust induction process in place so that new staff and volunteers understand relevant safeguarding policies and procedures
- student health and safety
- providing first aid as and when required
- having clear processes regarding intimate care
- meeting the needs of our students with medical conditions
- having systems which support early identification and early help through the early help assessment process
- developing inclusive practice which promotes the voice of the child and seeks to reduce the barriers that students from vulnerable backgrounds may have and which may in turn affect their mental health and wellbeing, as well as their ability to share information about maltreatment and abuse
- establishing and maintaining a safe school environment, where all students feel secure, can learn and develop, are encouraged to talk and are listened to;
- including opportunities in the strands of the PSHE, computing curriculum and whole school approach to care, guidance and support, for students to develop the skills they need to recognise, and stay safe from abuse
- using latest guidance on Online Safety

- having regard to the DfE statutory guidance (updated 2025) on relationships and sex education
- keep practices and policies under constant review and use issues as learning experiences to revise processes.
- ensuring all teaching and support staff are aware of signs and symptoms of abuse, know the correct procedure for referring concerns or allegations against staff and receive appropriate training to enable them to carry out these requirements
- ensuring all volunteers understand their responsibilities in being alert to the signs of abuse and responsibility for referring any concerns to the designated person responsible for child protection
- exercising their duty to work in partnership with other agencies and to share information with them, including attendance at child protection conferences, core groups and preparation of reports for conferences
- encouraging and supporting parents/carers, working in partnership with them
- supporting students in accordance with their agreed child protection plan
- a child centred approach, making it clear what our staff should do to keep children safe
- ensuring students know they can talk to staff confidentially by reminding them in assemblies, updating the student notice board and signposting them as required.

1.2 Safeguarding Young People

Safeguarding and promoting the welfare of children is defined for the purposes of this policy as:

- providing help and support to meet the needs of children as soon as problems emerge
- protecting children from maltreatment, whether that is within or outside the home, including online
- preventing the impairment of children's mental and physical health or development
- ensuring that children grow up in circumstances consistent with the provision of safe and effective care
- taking action to enable all children to have the best outcomes

Children includes everyone under the age of 18.

2) Roles & Responsibilities

2.1 The Designated Safeguarding Lead (DSL)

The Designated Safeguarding Lead is a member of the school's Senior Leadership Team. The DSL is not a member of the governing body, or related to it. Our **DSL is Andy Joy**, Deputy Head teacher. He is also the DSL for EYFS. The DSL takes responsibility for Child Protection and wider safeguarding in the school. This includes online safety and understanding our filtering and monitoring processes on school devices and school networks to keep pupils safe online.

The Deputy Safeguarding lead is: **Jo Gulliford**

During term time, the DSL will be available during school hours for staff to discuss any safeguarding concerns.

The DSL can be contacted out of hours using the email andyj@immanuelsschool.org.uk

When the DSL is absent, the deputy, Jo Gulliford will act as cover and can be contacted using joannagulliford@immanuelsschool.org.uk

If the DSL and Deputies are not available, Kirsty Judge (class teacher) will act as cover (for example, during out-of-hours/out-of-term activities).

All trips leaving the school will have the DSL mobile telephone number on the back of their work lanyard. Emergency contact information is on the class information sheets which are taken on all trips.

All staff will be made aware of who the Designated Safeguarding Lead is and what their role is Annex C, KCSIE 2025, sets out clearly the role of the DSL in schools.

2.2 The role of the Designated Safeguarding Lead

The governing body will ensure an appropriate senior member of staff, from the school leadership team, is appointed to the role of designated safeguarding lead. The designated safeguarding lead should take lead responsibility for safeguarding and child protection (including online safety and understanding the filtering and monitoring systems and processes in place). This should be explicit in the role holder's job description. Whilst the activities of the designated safeguarding lead can be delegated to appropriately trained deputies, the ultimate lead responsibility for safeguarding and child protection, as set out below, remains with the designated safeguarding lead. This responsibility should not be delegated.

2.3 Managing referrals

The designated safeguarding lead is expected to:

- refer cases of suspected abuse and neglect to the local authority children's social care as required and support staff who make referrals to local authority children's social care
- refer cases to the Channel programme where there is a radicalisation concern (PREVENT) as required and support staff who make referrals to the Channel programme
- refer cases where a person is dismissed or left due to risk/harm to a child to the Disclosure and Barring Service as required and in liaison with the Head of Personnel
- refer cases where a crime may have been committed to the Police as required. *NPCC- When to call the police* should help understand when to consider calling the police and what to expect when working with the police.

2.4 Work with others

The designated safeguarding lead is expected to:

- act as a point of contact with the three safeguarding partners (Local authority, the BNSSG and the chief officer of police for an area any part of which falls within the council area).
- liaise with the headteacher to inform them of issues - especially ongoing enquiries under section 47 of the Children Act 1989 and police investigations. This should include being aware of the requirements for children to have an appropriate adult.
- as required, liaise with the “case manager” and the designated officer(s) at the local authority for child protection concerns in cases which concern a staff member
- liaise with staff (especially pastoral support staff and SENCO) on matters of safety and safeguarding (including online and digital safety) and when deciding whether to make a referral by liaising with relevant agencies; and
- act as a source of support, advice and expertise for all staff.
- liaise with the senior mental health lead and, where available, the mental health support team, where safeguarding concerns are linked to mental health
- promote supportive engagement with parents and/or carers in safeguarding and promoting the welfare of children, including where families may be facing challenging circumstances
- work with the headteacher and relevant strategic leads, taking lead responsibility for promoting educational outcomes by knowing the welfare, safeguarding and child protection issues that children in need are experiencing, or have experienced, and identifying the impact that these issues might be having on children’s attendance, engagement and achievement at school.

This includes:

- ensuring that the school knows of any children who have or have had a social worker, understanding their academic progress and attainment, and maintaining a culture of high aspirations for this cohort, and
- supporting teaching staff to provide additional academic support or reasonable adjustments to help children who have or have had a social worker reach their potential, recognising that even when statutory social care intervention has ended, there is still a lasting impact on children’s educational outcomes. (KCSIE 2025 page 173)

2.5 Training

The DSL and DDSL will be trained to an advanced level by attending Advanced Inter-agency Child Protection training (in line with locally agreed procedures such that they can provide support and advice to others) and this will be maintained by attending CP Update training every 2 years thereafter along with annual informal supplementary training. The DSL will ensure they are up to date with the latest safeguarding information and sharing of best practice. The DSL will undertake Prevent awareness training. This training will provide them with a good understanding of their own role and the process, procedures and responsibilities of other agencies, particularly children’s social care, so they can:

- provide annual training to all staff (including EYFS staff) on their safeguarding responsibilities
- understand the assessment process for providing early help and statutory intervention, including local criteria for action and local authority children’s social care referral arrangements.
- understand how local authorities conduct a child protection case conference and a child protection review conference and be able to attend and contribute to these effectively if required to do so;
- ensure each member of staff has access to, and understands, the school’s safeguarding and child protection policy and reporting procedures, especially new and part time staff

- ensure all new staff attend safeguarding induction training and that relevant staff have read and understood Part 1 and Annex B (if working directly with children) and Annex A (if not working directly with children) of KCSIE 2025
- ensure that all members of the governing body have read Part 1 & 2 and Annex A and all other sections of KCSIE 2025 relating to governance and oversight
- provide a yearly update training session during INSET to all staff as well as on-going CPD informed by information shared at the DSL forums during the year for staff to support the culture of safeguarding
- are alert to the specific needs of children
- understand relevant data protection legislation and regulations, especially the Data Protection Act 2018 and the General Data Protection Regulation
- understand the importance of information sharing, within the school, other agencies, organisations and practitioners
- are able to keep detailed, accurate, secure records of concerns and referrals and monitor these regularly
- understand and support the school with regards to the requirements of the Prevent duty and are able to provide advice and support to staff on protecting children from the risk of radicalisation
- are able to understand the unique risks associated with online safety and be confident that they have the relevant knowledge and up to date capability required to keep children safe whilst they are online at school or at home
- can recognise the additional risks that children with SEN and disabilities (SEND) face online, for example, from online bullying, grooming and radicalisation and are confident they have the capability to support SEND children to stay safe online
- obtain access to resources and attend any relevant or refresher training courses
- encourage a culture of listening to children and taking into account their wishes and feelings, among all staff, in any measures the school may put in place to protect them. In addition to the formal training set out above, their knowledge and skills should be refreshed at regular intervals, as required, and at least annually, to allow them to understand and keep up with any developments relevant to their role
- ensure all staff have regular updated online safety training, including an understanding of all the expectations, roles and responsibilities around filtering and monitoring.
- Keep a training plan for the school which shows all training throughout the year
- Develop a curriculum that supports children to learn about safeguarding risks and how to keep themselves safe
- Update Governors about issues related to their responsibilities

2.6 Raise Awareness

The designated safeguarding lead will:

- ensure the school's safeguarding and child protection policy is known, understood and used appropriately
- ensure the school's safeguarding and child protection policy is reviewed annually (as a minimum) and the procedures and implementation are updated and reviewed regularly, and work with governing body regarding this
- ensure the safeguarding and child protection policy is available publicly and parents are aware of the fact that referrals about suspected abuse or neglect will be made (in cases of immediate risk to a child this will be done without consent from the parent/carer) and the role of the school in this
- link with the safeguarding partner arrangements to make sure staff are aware of any training opportunities and the latest local policies on local safeguarding arrangements.
- help promote educational outcomes by sharing the information about the welfare, safeguarding and child protection issues that children, including children with a social worker,

are experiencing, or have experienced, with all school staff so that staff know who these children are, understand their academic progress and attainment and maintain a culture of high aspirations for this cohort

- support teaching staff to identify the challenges that children in this group might face and the additional academic support and adjustments that they could make to best support these children.

2.7 Child protection file

Where children leave the school, the designated safeguarding lead must ensure their child protection file is transferred to the new school or college as soon as possible, and **within 5 days** for an in-year transfer or within the **first 5 days** of the start of a new term to allow the new school or college to have support in place for when the child arrives. The designated safeguarding lead should ensure secure transit and delivery of the file. This should be transferred separately from the main pupil file. Receiving schools and colleges must ensure key staff such as designated safeguarding leads and special educational needs co-ordinators (SENCOs) or the named persons with oversight for special educational needs and disability (SEND) in a college, are aware as required.

In addition to the child protection file, the designated safeguarding lead should also consider if it would be appropriate to share any information with the new school or college in advance of a child leaving. For example, information that would allow the new school or college to continue supporting children who have had a social worker and been victims of abuse, or those who are currently receiving support through the 'Channel' programme and can have that support in place for when the child arrives. More information on the child protection file is in Annex C (KCSIE 2025)

2.8 Availability

During term time the designated safeguarding lead (or a deputy) will always be available (during school hours) for staff in the school to discuss any safeguarding concerns. Whilst generally speaking the designated safeguarding lead (or deputy) would be expected to be available in person, in exceptional circumstances availability via phone and or other such media is acceptable.

Emergency contact details (including phone number) are shared with the Local Authority to be used during holidays for strategy discussions, Initial Child Protection Conferences or Review Conferences and in the case of an emergency.

2.9 Reporting

DSL reporting expectations

To Senior Leadership (Head / SLT):

- Share safeguarding risks, trends, and serious cases
- Escalate urgent or high-risk concerns immediately
- Flag capacity, training, or compliance issues
- Provide regular updates

To Governors / Trustees:

- Provide an anonymised summary of referrals, if any
- Cover number of concerns, training, and policy compliance
- Confirm serious cases are managed appropriately
- No names or case details

Our school will be alert to the potential needs of the following vulnerable children in relation to safeguarding and child protection and in their need for early help:

Children and young people with **special educational needs and disabilities** can face additional safeguarding challenges because:

- there may be assumptions that indicators of possible abuse such as behaviour, mood and injury relate to the child's disability without further exploration;
- children with SEN and disabilities can be disproportionately impacted by things like bullying without outwardly showing any signs; and
- difficulties may arise in overcoming communication barriers;
- children with special educational needs, without an EHCP could be more vulnerable;
- they are often isolated, may have difficulty in communicating effectively and lack confidence to talk to adults;
- cognitive understanding – being unable to understand the difference between fact and fiction in online content and then repeating the content/behaviours in schools or colleges or the consequences of doing so.

Our internal support processes will ensure that students with SEN and disabilities have adequate pastoral care.

2.10 Preventing Harm

We recognise that developing the necessary qualities (e.g. emotional resilience, self-confidence) within both the children themselves and the school as a whole can help to prevent harm.

The school will therefore:

- establish and maintain an ethos where children and young people feel secure, are encouraged to talk and are listened to. In particular pupils in primary years are encouraged to talk to their class teacher. Secondary pupils are encouraged to talk to their form tutor. Additionally, all pupils know that they may approach the pastoral lead at any time. If the pastoral lead is not in school, pupils know they can initiate contact through the headteacher
- ensure children and young people know that there are adults in the school who they can approach if they are worried or in difficulty
- pupils are taught about safeguarding, including online safety, through various teaching and learning opportunities as part of our broad and balanced curriculum. Included are the curriculum activities and opportunities that equip children and young people with the skills they need to stay safe from abuse and ensure that they know who to turn to for help, mainly through our PSHE, online safety lessons and RSE
- include in the curriculum materials which will help children and young people develop realistic attitudes to the responsibilities of adult life, particularly with regard to the care of children and young people.

2.11 Early Help

KCSIE 2025 states that “All staff should be prepared to identify children who may benefit from early help. Early help means providing support as soon as a problem emerges at any point in a child's life, from the foundation years through to the teenage years”. Staff should discuss early help requirements with the DSL (or a deputy). We follow the South Gloucestershire early help process which includes the use of the Early Help Assessment and Plan (EHAP). It may be appropriate for a member of school staff to initiate an EHAP and take on the role of Lead Professional or become a member of a Team around the Child/Family (TAC/F) as part of the EHAP process. If this is the case, then the staff member should be supported by the DSL, for example, by being given time to write the EHAP and attend TAC/F meetings. Key staff should have an understanding of the EHAP process and how they can contribute to it as and when appropriate.

2.12 Designated Governor

The Designated Governor for Safeguarding at this school is Fiona Barber and can be contacted via email: fionab@immanuelsschool.org.uk

The responsibilities of governing bodies, proprietors and management committees are outlined in part two of KCSIE 2025. Governors are aware of their duties under the Human Rights Act and Equality Act, particularly for SEND pupils.

2.13 Local Authority Designated Officer (LADO)

Jon Goddard. Contact details are:

Tel. 01454 868508

Email. lado@southglos.gov.uk

The first reporting point for any allegation raised needs to be the DSL and then referred on to LADO, if it is believed that the Allegations Management threshold has been reached. If parents make allegations these should be directed to the school and not LADO. Any parental raised matter should also be considered under the Complaints procedure upon completion of an investigation, if they are not satisfied with the outcome & as such the school should follow their complaints policy. The LADO is a professional facing role and deals with Headteachers, Governors and DSLs directly and will not communicate directly with parents/carers.

3) Types of abuse and specific safeguarding issues

Child abduction and community safety incidents
Child Exploitation (including both criminal and sexual)
Child-on-child abuse
Children Missing from Education
Children absent from Education
Children with a social worker
Children and the Court System
Children with family members in prison
County Lines
Cybercrime
Domestic Abuse
Drugs
Fabricated illness
Faith Abuse
Female Genital Mutilation (FGM) & FGM mandatory reporting duty for teachers
Forced Marriage
Homelessness
Honour based Abuse
Mental Health
Private Fostering
Serious youth violence and risks of involvement
Sexting
Sexual violence and sexual harassment between children in schools
Teenage abusive relationships
The Prevent duty - Preventing radicalisation and being drawn into extremism
Trafficking and modern slavery (including the National Referral Mechanism)
Upskirting

3.1 Indicators of abuse and neglect

ABUSE

A form of maltreatment of a child. Somebody may abuse or neglect a child by inflicting harm or by failing to act to prevent harm. Harm can include ill treatment that is not physical as well as the impact of witnessing ill treatment of others. This can be particularly relevant, for example, in relation to the impact on children of all forms of domestic abuse, including where they see, hear or experience its effects. Children may be abused in a family or in an institutional or community setting by those known to them or, more rarely, by others. Abuse can take place wholly online, or technology may be used to facilitate offline abuse. Children may be abused by an adult or adults or by another child or children. (see paragraph 24 in KCSIE 2025)

PHYSICAL ABUSE

A form of abuse which may involve hitting, shaking, throwing, poisoning, burning or scalding, drowning, suffocating or otherwise causing physical harm to a child. Physical harm may also be caused when a parent or carer fabricates the symptoms of, or deliberately induces, illness in a child. (see paragraph 25 in KCSIE 2025)

EMOTIONAL ABUSE

The persistent emotional maltreatment of a child such as to cause severe and adverse effects on the child's emotional development. It may involve conveying to a child that they are worthless or unloved, inadequate, or valued only insofar as they meet the needs of another person. It may include not giving the child opportunities to express their views, deliberately silencing them or 'making fun' of what they say or how they communicate. It may feature age or developmentally

inappropriate expectations being imposed on children. These may include interactions that are beyond a child's developmental capability as well as overprotection and limitation of exploration and learning or preventing the child from participating in normal social interaction. It may involve seeing or hearing the ill-treatment of another. It may involve serious bullying (including cyberbullying), causing children frequently to feel frightened or in danger, or the exploitation or corruption of children. Some level of emotional abuse is involved in all types of maltreatment of a child, although it may occur alone. (see paragraph 26 in KCSIE 2025)

SEXUAL ABUSE

Involves forcing or enticing a child or young person to take part in sexual activities, not necessarily involving violence, whether or not the child is aware of what is happening. The activities may involve physical contact, including assault by penetration (for example rape or oral sex) or non-penetrative acts such as masturbation, kissing, rubbing and touching outside of clothing. They may also include non-contact activities, such as involving children in looking at, or in the production of, sexual images, watching sexual activities, encouraging children to behave in sexually inappropriate ways, or grooming a child in preparation for abuse. Sexual abuse can take place online, and technology can be used to facilitate offline abuse. Sexual abuse is not solely perpetrated by adult males. Women can also commit acts of sexual abuse, as can other children. The sexual abuse of children by other children is a specific safeguarding issue in education and all staff should be aware of it and of their school policy and procedures for dealing with it. (see paragraph 27 in KCSIE 2025).

NEGLECT

The persistent failure to meet a child's basic physical and/or psychological needs, likely to result in the serious impairment of the child's health or development. Neglect may occur during pregnancy, for example, as a result of maternal substance abuse. Once a child is born, neglect may involve a parent or carer failing to: provide adequate food, clothing and shelter (including exclusion from home or abandonment); protect a child from physical and emotional harm or danger; ensure adequate supervision (including the use of inadequate care-givers); or ensure access to appropriate medical care or treatment. It may also include neglect of, or unresponsiveness to, a child's basic emotional needs. (see paragraph 28 in KCSIE 2025)

3.2 Child Criminal Exploitation (CCE) and Child Sexual Exploitation (CSE)

Both CCE and CSE are forms of abuse that occur where an individual or group takes advantage of an imbalance in power to coerce, manipulate or deceive a child into taking part in criminal or sexual activity. It may involve an exchange for something the victim needs or wants, and/or for the financial advantage or increased status of the perpetrator or facilitator and/or through violence or the threat of violence. CCE and CSE can affect children, both male and female and can include children who have been moved (commonly referred to as trafficking) for the purpose of exploitation. (KCSIE 2025 paragraph 34)

Child Criminal Exploitation (CCE)

Some specific forms of CCE can include children being forced or manipulated into transporting drugs or money through county lines, working in cannabis factories, shoplifting or pickpocketing. They can also be forced or manipulated into committing vehicle crime or threatening/committing serious violence to others.

Children can become trapped by this type of exploitation, as perpetrators can threaten victims (and their families) with violence or entrap and coerce them into debt. They may be coerced into carrying weapons such as knives or begin to carry a knife for a sense of protection from harm from others. As children involved in criminal exploitation often commit crimes themselves, their vulnerability as victims is not always recognised by adults and professionals, (particularly older children), and they are not treated as victims despite the harm they have experienced. They may still have been criminally exploited even if the activity appears to be something they have agreed or consented to.

It is important to note that the experience of girls who are criminally exploited can be very different to that of boys. The indicators may not be the same, however professionals should be aware that girls are at risk of criminal exploitation too. It is also important to note that both boys and girls being criminally exploited may be at higher risk of sexual exploitation. (KCSIE 2025 paragraphs 35-37)

Child Sexual Exploitation (CSE)

CSE is a form of child sexual abuse. Sexual abuse may involve physical contact, including assault by penetration (for example, rape or oral sex) or non-penetrative acts such as masturbation, kissing, rubbing, and touching outside clothing. It may include non-contact activities, such as involving children in the production of sexual images, forcing children to look at sexual images or watch sexual activities, encouraging children to behave in sexually inappropriate ways or grooming a child in preparation for abuse including via the internet.

CSE can occur over time or be a one-off occurrence and may happen without the child's immediate knowledge for example through others sharing videos or images of them on social media.

CSE can affect any child who has been coerced into engaging in sexual activities. This includes 16- and 17-year-olds who can legally consent to have sex.

Some children do not realise they are being exploited and may believe they are in a genuine romantic relationship. (KCSIE 2025 paragraphs 38-40)

In response to Child Exploitation, as a school we are confident in identifying the signs of exploitation and use the Risk Outside the Home (ROTH) toolkit to do this. We know that we must refer all concerns around exploitation to ART. We are aware of the South Glos way with regards to identifying and risk management for children and young people who are being exploited or at risk of serious young violence.

3.3 Contextual Safeguarding

Safeguarding incidents and/or behaviours can be associated with factors outside of school and can occur between children outside of school. All staff, but especially the DSL and Deputy DSL, will consider the context within which such behaviours occur. This is known as contextual safeguarding, which simply means assessments of children should consider whether wider environmental factors are present in a child's life that pose a threat to their safety and welfare. We will ensure that such information forms part of the referral we make to the Social Care teams.

3.4 Children who are Absent from Education

Children being absent from education for prolonged periods and/or on repeat occasions can act as a vital warning sign to a range of safeguarding issues including neglect, child sexual and child criminal exploitation - particularly county lines. It is important the school's response to persistently absent pupils and children missing education supports identifying such abuse, and in the case of absent pupils, helps prevent the risk of them becoming a child missing education in the future. This includes when problems are first emerging but also where children are already known to local authority children's social care and need a social worker (such as a child who is a child in need or who has a child protection plan, or is a looked after child), where being absent from education may increase known safeguarding risks within the family or in the community.

3.5 Children Missing Education (CME)

In response to the guidance in KCSIE 2025 the school has:

1. Staff who understand what to do when children do not attend regularly
2. Appropriate procedures and responses for if a pupil goes missing from education.
3. Staff who know the signs and triggers for travelling to conflict zones, FGM and forced marriage.
4. Procedures to inform the local authority when we plan to take pupils off-roll when they:

- a. leave school to be electively home educated
- b. move away from the school's location
- c. remain medically unfit beyond compulsory school age
- d. are in custody for four months or more (and will not return to school afterwards)
- e. are permanently excluded

We ensure that where a child is taken off our roll this is in the best interests of the pupil.

We will ensure that pupils who are expected to attend the school but fail to take up the place will be referred to the local authority.

When a pupil leaves the school, we will record the name of the pupil's new school.

3.6 Children with a social Worker

We recognise that if a child has a social worker, it is an indicator that the child is more at risk than most pupils. This may mean that they are more vulnerable to further harm, as well as facing educational barriers to attendance, learning, behaviour and poor mental health. We take these needs into account when making plans to support pupils who have a social worker.

3.7 County Lines

County lines is a term used to describe organised criminal networks involved in exporting illegal drugs using dedicated mobile phone lines or other form of "deal line". This activity can happen locally as well as across the UK - no specified distance of travel is required. Children and vulnerable adults are exploited to move, store and sell drugs and money. Offenders will often use coercion, intimidation, violence (including sexual violence) and weapons to ensure compliance of victims.

- Children can be targeted and recruited into county lines in a number of locations including any type of schools (including special schools), further and higher educational institutions, pupil referral units, children's homes and care homes. Children are also increasingly being targeted and recruited online using social media. Children can easily become trapped by this type of exploitation as county lines gangs can manufacture drug debts which need to be worked off or threaten serious violence and kidnap towards victims (and their families) if they attempt to leave the county lines network.
- A number of the indicators for CCE and CSE as detailed above may be applicable to where children are involved in county lines. Some additional specific indicators that may be present where a child is criminally exploited through involvement in county lines are children who:
 - go missing (from school or home) and are subsequently found in areas away from their home
 - have been the victim, perpetrator or alleged perpetrator of serious violence (e.g. knife crime)
 - are involved in receiving requests for drugs via a phone line, moving drugs, handing over and collecting money for drugs
 - are exposed to techniques such as 'plugging', where drugs are concealed internally to avoid detection
 - are found in accommodation that they have no connection with, often called a 'trap house or cuckooing' or hotel room where there is drug activity
 - owe a 'debt bond' to their exploiters
 - have their bank accounts used in criminal activity

3.8 Domestic Abuse

The Domestic Abuse Act 2021 received Royal Assent on 29 April 2021. The Act introduces the first ever statutory definition of domestic abuse and recognises the impact of domestic abuse on

children, as victims in their own right, if they see, hear or experience the effects of abuse. The statutory definition of domestic abuse, based on the previous cross-government definition, ensures that different types of relationships are captured, including ex-partners and family members. The definition captures a range of different abusive behaviours, including physical, emotional and economic abuse and coercive and controlling behaviour. Under the statutory definition, both the person who is carrying out the behaviour and the person to whom the behaviour is directed towards must be aged 16 or over and they must be “personally connected” (as defined in section 2 of the 2021 Act).

Types of domestic abuse include intimate partner violence, abuse by family members, teenage relationship abuse and child to parent abuse. Anyone can be a victim of domestic abuse, regardless of sexual identity, age, ethnicity, socio-economic status, sexuality or background and domestic abuse can take place inside or outside of the home. The government has issued statutory guidance to provide further information for those working with domestic abuse victims and perpetrators, including the impact on children.

All children can witness and be adversely affected by domestic abuse in the context of their home life where domestic abuse occurs between family members. Experiencing domestic abuse can have a serious, long lasting emotional and psychological impact on children. In some cases, a child may blame themselves for the abuse or may have had to leave the family home as a result.

Young people can also experience domestic abuse within their own intimate relationships. This form of child-on-child abuse is sometimes referred to as ‘teenage relationship abuse’. Depending on the age of the young people, this may not be recognised in law under the statutory definition of ‘domestic abuse’ (if one or both parties are under 16). However, as with any child under 18, where there are concerns about safety or welfare, child safeguarding procedures should be followed and both young victims and young perpetrators should be offered support. (KCSIE 2025 page 154/155)

3.9 Female Genital Mutilation (FGM)

Female genital mutilation refers to procedures that intentionally alter or cause injury to the female genital organs for non-medical reasons. The practice is illegal in the UK.

FGM typically takes place between birth and around 15 years old; however, it is believed that the majority of cases happen between the ages of 5 and 8.

Risk factors for FGM include:

- low level of integration into UK society
- mother or a sister who has undergone FGM
- girls who are withdrawn from PSHE
- visiting female elder from the country of origin
- being taken on a long holiday to the country of origin
- talk about a ‘special’ procedure to become a woman

Symptoms of FGM

FGM may be likely if there is a visiting female elder, there is talk of a special procedure or celebration to become a woman, or parents wish to take their daughter out-of-school to visit an ‘at-risk’ country (especially before the summer holidays), or parents who wish to withdraw their children from learning about FGM. Staff should not assume that FGM only happens outside the UK.

Indications that FGM may have already taken place may include:

- difficulty walking, sitting or standing and may even look uncomfortable.
- spending longer than normal in the bathroom or toilet due to difficulties urinating.

- spending long periods of time away from a classroom during the day with bladder or menstrual problems.
- frequent urinary, menstrual or stomach problems.
- prolonged or repeated absences from school, especially with noticeable behaviour changes (e.g. withdrawal or depression) on the girl's return
- reluctance to undergo normal medical examinations.
- confiding in a professional without being explicit about the problem due to embarrassment or fear.
- talking about pain or discomfort between her legs.

The Serious Crime Act 2015 sets out a duty on professionals (including teachers) to notify police when they discover that FGM appears to have been carried out on a girl under 18. In schools, this will usually come from a disclosure (unlike in the medical profession where an observation may have been made).

Teachers must personally report to the police cases where they discover that an act of FGM appears to have been carried out; and discuss any such cases with the safeguarding lead and children's social care. The duty does not apply in relation to at risk or suspected cases. All other staff should share concerns directly with the Designated Safeguarding Lead and do not need to contact the police personally.

3.10 Honour-based Abuse

So-called 'honour-based' abuse (HBA) encompasses crimes which have been committed to protect or defend the honour of the family and/or the community, including Female Genital Mutilation (FGM), forced marriage, and practices such as breast ironing. All forms of so called HBA are abuse (regardless of the motivation) and should be handled and escalated as such.

Where staff are concerned that a child might be at risk of HBA, they must contact the Designated Safeguarding Lead as a matter of urgency.

3.11 Mental Health

All staff are aware that mental health problems can, in some cases, be an indicator that a child may put themselves at risk or has suffered or is at risk of suffering from abuse, neglect or exploitation.

School staff are not expected or trained to diagnose mental health conditions or issues but may notice behaviours that may be of concern.

Where staff have a mental health concern about a child that may also be a safeguarding concern, they should raise the issue by informing the designated safeguarding lead or a deputy through the normal safeguarding referral processes.

3.12 The Prevent duty

As part of the Counter Terrorism and Security Act 2015, schools have a duty to 'prevent people being drawn into terrorism'. This has become known as the 'Prevent Duty'.

Where staff are concerned that children and young people are developing extremist views or show signs of becoming radicalized, they should discuss this with the Designated Safeguarding Lead. The Designated Safeguarding Lead and staff have received training about the Prevent Duty and tackling extremism and are able to support anyone who has concerns in this area.

We use the curriculum to ensure that children and young people understand how people with extreme views share these with others, especially using the internet and mobile technology.

Staff will be alert to changes in children's behaviour, which could indicate that they may be in need of help or protection. Staff will use their judgement in identifying children who might be at risk of radicalisation and act proportionately which may include the designated safeguarding lead (or deputy) making a Prevent referral.

We are committed to ensuring that our pupils are offered a broad and balanced curriculum that aims to prepare them for life in modern Britain. Teaching the school's core values (the ICS Pillars) alongside the fundamental British Values in citizenship, PHSE, news and debate classes (as well as throughout the curriculum) supports quality teaching and learning, whilst making a positive contribution to the development of a fair, just and civil society.

If a member of staff raises a concern about radicalisation the School will act early by visiting the ACT Early website (<https://actearly.uk>) or call the National Police Prevent Advice Line (0800 0113764).

3.13 Recognising Extremism

Early indicators of radicalisation or extremism may include:

- showing sympathy for extremist causes
- glorifying violence, especially to other faiths or cultures
- making remarks or comments about being at extremist events or rallies outside school
- evidence of possessing illegal or extremist literature
- advocating messages similar to illegal organisations or other extremist groups
- out of character changes in dress, behaviour and peer relationships (but there are also very powerful narratives, programmes and networks that young people can come across online so involvement with particular groups may not be apparent.)
- secretive behaviour
- online searches or sharing extremist messages or social profiles
- Looking up to inappropriate role models that promote extremism e.g. misogyny
- intolerance of difference, including faith, culture, gender, race or sexuality
- graffiti, art work or writing that displays extremist themes
- attempts to impose extremist views or practices on others
- verbalising anti-Western or anti-British views
- advocating violence towards others

Even very young children may be vulnerable to radicalisation by others, whether in the family or outside, and display concerning behaviour. The Prevent Duty does not require teachers to carry out unnecessary intrusion into family life but as with any other safeguarding risk, they must take action when they observe behaviour of concern.

The safeguarding procedures outlined above need to be followed in exactly the same way should staff have a concern about potential radicalisation or undue influences.

As a school we have completed our DfE Prevent duty risk assessment which is bespoke to our school and local community.

3.14 Child-on-child abuse, including sexual violence, sexual harassment and upskirting.

All staff should be aware that children can abuse other children (often referred to as child-on-child abuse), and that it can happen both inside and outside of school and online. All staff should be clear as to the school's policy and procedures with regard to child-on-child abuse and the important role they have to play in preventing it and responding where they believe a child may be at risk from it. All staff should understand that even if there are no reports in their schools it does not mean it is not happening. It may be the case that abuse is not being reported. As such it is important that when

staff have any concerns regarding child-on-child abuse they should speak to their designated safeguarding lead (or a deputy).

It is essential that all staff understand the importance of challenging inappropriate behaviours between children that are abusive in nature. Examples of which are listed below. Downplaying certain behaviours, for example dismissing sexual harassment as “just banter”, “just having a laugh”, “part of growing up” or “boys being boys” can lead to a culture of unacceptable behaviours, an unsafe environment for children and in worst case scenarios a culture that normalises abuse leading to children accepting it as normal and not coming forward to report it.

All staff need to be aware of the dangers of children watching and having access to pornography and the impact this will have on them forming healthy relationships. Any concerns need to be reported to the DSL.

Child-on-child abuse is most likely to include, but may not be limited to:

- bullying (including cyberbullying, prejudice-based and discriminatory bullying)
- abuse in intimate personal relationships between children (sometimes known as ‘teenage relationship abuse’)
- physical abuse such as hitting, kicking, shaking, biting, hair pulling, or otherwise causing physical harm (this may include an online element which facilitates, threatens and/or encourages physical abuse)
- sexual violence such as rape, assault by penetration and sexual assault; (this may include an online element which facilitates, threatens and/or encourages sexual violence)
- sexual harassment such as sexual comments, remarks, jokes and online sexual harassment, which may be standalone or part of a broader pattern of abuse
- causing someone to engage in sexual activity without consent
- consensual and non-consensual sharing of nude and semi-nude images and/or videos (also known as sexting or youth produced sexual imagery)
- upskirting
- initiation/hazing type violence and rituals (this could include activities involving harassment, abuse or humiliation used as a way of initiating a person into a group and may also include an online element).

Children who are victims of sexual violence and sexual harassment will likely find the experience stressful and distressing. This will, in all likelihood, adversely affect their educational attainment. Sexual violence and harassment exist on a continuum and may overlap, they can occur online and offline (both verbal and physical) and are never acceptable. It is important that all victims are taken seriously and offered appropriate support. Staff should be aware that some groups are potentially more at risk.

Staff should be aware of the importance of:

- Making clear that sexual violence and sexual harassment is not acceptable, will never be tolerated and is not part of growing up
- Not tolerating or dismissing sexual violence or sexual harassment as “banter”, “part of growing up”, “just having a laugh”, or “boys being boys”
- Challenging behaviours (potentially criminal in nature), such as grabbing bottoms, flicking bras and lifting skirts. Dismissing or tolerating such behaviours risks normalising them.

We believe that all children have the right to attend school and learn in a safe environment. Children should be free from harm by adults in school and other students.

Allegations may be made against students by others in the school, which are of a safeguarding nature. Safeguarding issues raised in this way may include physical abuse, emotional abuse, sexual

abuse and sexual exploitation. It is likely that to be considered a safeguarding allegation against a pupil, some of the following features will be found.

The allegation:

- is made against an older pupil and refers to their behaviour towards a younger pupil or a more vulnerable pupil
- is of a serious nature, possibly including a criminal offence
- raises risk factors for other pupils in the school
- indicates that other pupils may have been affected by this student
- indicates that young people outside the school may be affected by this student

3.15 Harmful Sexual Behaviour (HSB)

Children's sexual behaviour exists on a wide continuum, ranging from normal and developmentally expected to inappropriate, problematic, abusive and violent. Problematic, abusive and violent sexual behaviour is developmentally inappropriate and may cause developmental damage. A useful umbrella term is The Voyeurism (Offences) Act 2019 which amends the Sexual Offences Act 2003 to make upskirting a specific offence of voyeurism. The Act came into force on 12 April 2019.

Consensual image sharing, especially between older children of the same age, may require a different response. It might not be abusive – but children still need to know it is illegal- whilst non-consensual is illegal and abusive.

HSB can occur online and/or face-to-face and can also occur simultaneously between the two. HSB should be considered in a child protection context. When considering HSB, both ages and the stages of development of the children are critical factors. Sexual behaviour between children can be considered harmful if one of the children is much older, particularly if there is more than two years' difference or if one of the children is pre-pubescent and the other is not. However, a younger child can abuse an older child, particularly if they have power over them, for example, if the older child is disabled or smaller in stature. It is effective safeguarding practice for the DSL and deputy to have a good understanding of HSB.

HSB can, in some cases, progress on a continuum. Addressing inappropriate behaviour can be an important intervention that helps prevent problematic, abusive and/or violent behaviour in the future. Children displaying HSB have often experienced their own abuse and trauma. It is important that they are offered appropriate support.

3.16 Serious Youth Violence (SYV)

All staff should be aware of the indicators, which may signal children are at risk from, or are involved with serious violent crime. These may include increased absence from school, a change in friendships or relationships with older individuals or groups, a significant decline in educational performance, signs of self-harm or a significant change in wellbeing, or signs of assault or unexplained injuries. Unexplained gifts or new possessions could also indicate that children have been approached by, or are involved with, individuals associated with criminal networks or groups and may be at risk of criminal exploitation. (KCSIE 2025 paragraph 46).

All staff should be aware of the range of risk factors which increase the likelihood of involvement in serious youth violence, such as being male, having been frequently absent or permanently excluded from school, having experienced child maltreatment and having been involved in offending, such as theft or robbery. Advice for schools is provided in the Home Office's Preventing youth violence and gang involvement and its Criminal exploitation of children and vulnerable adults: county lines guidance.

3.17 Sharing nudes and semi-nudes

In cases of 'sharing nudes and semi-nudes' we will follow guidance given to schools by the UK Council for Internet Safety (UKCIS) published in February 2024 – 'Sharing nudes and semi-nudes – advice for education settings working with children and young people.

Your responsibilities when responding to an incident:

If you are made aware of an incident involving the consensual or non-consensual sharing of nude or semi-nude images/videos (also known as 'sexting' or 'youth produced sexual imagery'), you must report it to the DSL immediately.

You must not:

- View, copy, print, share, store or save the imagery yourself, or ask a pupil to share or download it (if you have already viewed the imagery by accident, you must report this to the DSL)
- Delete the imagery or ask the pupil to delete it
- Ask the pupil(s) who are involved in the incident to disclose information regarding the imagery (this is the DSL's responsibility)
- Share information about the incident with other members of staff, the pupil(s) it involves or their, or other, parents and/or carers
- Say or do anything to blame or shame any young people involved

You should explain that you need to report the incident and reassure the pupil(s) that they will receive support and help from the DSL.

3.18 Sexual Activity and the under 18s

A précis of the Law regarding Sexual Activity and U18s

The age of consent for all sex is 16. The Sexual Offences Act 2003 makes it easier to prosecute people who pressure or force others into sexual activity.

Under 16s

If under 16 activity is consensual it may be less serious than if the child were under 13 but may nevertheless have serious consequences for the welfare of the young person. Consideration should be given in every case involving a child aged 13-15 as to whether there should be a discussion with other agencies and whether a referral should be made to children's social care. The younger the child, and the wider the age gap between participants, the greater the concern. Where confidentiality needs to be preserved, a discussion can still take place as long as it does not identify the child (directly or indirectly).

Under 13s

A child under 13 does not, under any circumstances, have the legal capacity to consent to any form of sexual activity. In all cases where the sexually active young person is under the age of 13, there must be a formal recorded consultation with the Children & Young People Social Care.

16 & 17 Year Olds

Although sexual activity in itself is no longer an offence over the age of 16, young people under the age of 18 are still offered the protection of Child Protection Procedures under the Children Act 1989. Consideration still needs to be given to issues of sexual exploitation through prostitution, and abuse of power. Although they may be over 16, young people under the age of 18 are not deemed able to give consent if the sexual activity is with an adult in a position of trust/authority, or a family member as defined by the Sexual Offences Act 2003.

3.19 Private Fostering

A private fostering arrangement is one that is made privately (without the involvement of a local authority) for the care of a child under the age of 16 years (under 18, if disabled) by someone other than a parent or close relative, in their own home, with the intention that it should last for 28 days or more.

A close family relative is defined as a 'grandparent, brother, sister, uncle or aunt' and includes half-siblings and step-parents; it does not include great-aunts or uncles, great grandparents or cousins. Parents and private foster carers both have a legal duty to inform the relevant local authority at least six weeks before the arrangement is due to start; not to do so is a criminal offence.

Whilst most privately fostered children are appropriately supported and looked after, they are a potentially vulnerable group who should be monitored by the local authority, particularly when the child has come from another country. In some cases privately fostered children are affected by abuse and neglect, or can be involved in trafficking, child sexual exploitation or modern-day slavery. Schools have a mandatory duty to report to the local authority where they are aware or suspect that a child is subject to a private fostering arrangement. Although schools have a duty to inform the local authority, there is no duty for anyone, including the private foster carer or social workers to inform the school. However, it should be clear to the school who has parental responsibility.

School staff will notify the designated safeguarding lead when they become aware of private fostering arrangements. The designated safeguarding lead will speak to the family of the child involved to check that they are aware of their duty to inform the LA. The school itself has a duty to inform the local authority of the private fostering arrangements.

On admission to the school, we will take steps to verify the relationship of the adults to the child who is being registered.

3.20 Online Safety

We have an effective whole school approach to online safety in order to protect and educate pupils and staff in their use of technology. We have mechanisms to identify, intervene in, and escalate any concerns where appropriate.

When children use the school's network to access the internet, they are protected from inappropriate content by our filtering and monitoring systems. Use of the internet has many benefits for learning, however when used inappropriately this can put pupils at risk. Filtering and monitoring systems on their own are not sufficient to address this and pupils need to be provided with clear guidance on how to keep themselves safe and minimise these risks both in and outside school. To address this, we utilise an external provider who monitors and reports any issues immediately. Filtering is controlled by OpenDNS on the school server. All school laptops are set up with this system. The ipads are not but they are for EYFS and KS1 use, never without an adult immediately present.

Our approach to online safety is based on addressing the following four key categories of risk:

- **content:** being exposed to illegal, inappropriate, or harmful content, for example: pornography, racism, misogyny, self-harm, suicide, antisemitism, radicalisation, extremism, misinformation, disinformation (including fake news) and conspiracy theories.
- **contact:** being subjected to harmful online interaction with other users; for example: peer to peer pressure, commercial advertising and adults posing as children or young adults with the intention to groom or exploit them for sexual, criminal, financial or other purposes.
- **conduct:** online behaviour that increases the likelihood of, or causes, harm; for example, making, sending and receiving explicit images (e.g. consensual and non-consensual sharing of

nudes and semi-nudes and/or pornography, sharing other explicit images and online bullying, and

- **commerce:** risks such as online gambling, inappropriate advertising, phishing and or financial scams. If you feel your pupils, students or staff are at risk, please report it to the Anti-Phishing Working Group (KCSIE 2025 pg 38-42)

We train staff, as part of their induction, on safe internet use, filtering and monitoring and online safeguarding issues and the risks of online radicalisation. All staff members have annual refresher training.

We will make sure parents and carers:

- Are aware of the potential risks to children online and the importance of staying safe online
- Know what our school is asking children to do online, including what sites they will be using and who they will be interacting with from our school
- Are aware that they should only use reputable online companies or tutors if they wish to supplement the teaching and resources our school provides
- Know where else they can go for support to keep their children safe online
- Know the procedures for reporting any issues they become aware of immediately to the school to minimise risk to their own and other children and so that the school can take appropriate action.
- In addition, ICS uses the social media platforms and parent newsletters to offer advice and guidance to parents in relation to online risks.

ICS ensures all staff are aware of any restrictions placed on them with regards to the use of their mobile phone and cameras as outlined in the school acceptable use policy as set out in the Staff (and Volunteer) Acceptable Use Agreement.

We have a clear agreement in place for all learners, parents/carers, staff, volunteers and governors to sign to say that they are aware of what the schools acceptable use of internet in school, use of the school's ICT systems and use of their mobile and smart technology.

4) The Management of Safeguarding - governing board and others

The Governing Body (GB) will have a Designated Governor with responsibility for Safeguarding; this is Fiona Barber.

The Designated Governor will ensure that they utilise the experiences and expertise of staff when shaping safeguarding policies. Opportunities for staff to contribute to safeguarding arrangements and child protection will be provided. They will also be responsible for jointly undertaking the annual 175 safeguarding audit with the Headteacher and Designated Safeguarding Lead.

The GB will receive the Annual Safeguarding Report in September for the previous academic year and will review safeguarding practices in the school no less than annually to ensure that:

- The school carries out its statutory duties related to child protection and safeguarding, including the South Gloucestershire Children's Partnership requirements
- Sufficient resources are made available to enable necessary tasks to be carried out properly under inter-agency procedures
- Governors attend Child Protection / Safeguarding training
- Only persons suitable to work with children shall be employed in the school or work in a voluntary capacity as detailed in KCSIE 2025
- Where safeguarding concerns about a member of staff are substantiated, appropriate action is taken.

The GB will delegate responsibility for day-to-day procedures that ensure the smooth operational practice for safeguarding arrangements to the Headteachers and Designated Safeguarding Lead; this may be reported to Governors retrospectively.

4.1 Children missing from education

The GB will ensure that appropriate safeguarding responses to children who go missing from education are put in place, particularly on repeat occasions, to help identify the risk of abuse and neglect, including sexual abuse or exploitation, and to help prevent the risk of them going missing in future.

Where reasonably possible, the school will hold more than one emergency contact number for each pupil. This goes beyond the legal minimum and is good practice to give the school additional options to make contact with a responsible adult when a child missing from education is also identified as a welfare and/or safeguarding concern.

The GB will ensure that weaknesses identified within the Annual report; through on-going monitoring of safeguarding and child protection procedures and other sources, are addressed explicitly within the School Improvement Plans. The governing body will regularly monitor the implementation and impact of the identified actions.

The GB will ensure that appropriate filters and monitoring systems are in place for the school and will identify the steps required to ensure that the monitoring of internet use, particularly for vulnerable students such as those with special education needs and disabilities, is robust.

The GB controls the use of the school premises both within and outside school hours and has a duty to safeguard children and young people using the premises. Where services or activities are provided separately by another body, the GB will seek assurances that the body concerned has appropriate policies and procedures in place in regard to safeguarding children and child protection.

4.2 Personnel Lead (Jonathan Gulliford)

Part 3 of KCSIE 2025 sets out clearly the requirements and processes in relation to Safer Recruitment and these are fully detailed in our Safer Recruitment Policy.

In addition to the requirements within Schools Recruitment policy, the Personnel Lead will ensure that:

- All volunteers to the school have read either Part 1 (if working directly with children) or Annex A (if not working directly with children) of KCSIE 2025
- All staff have read Part 1 (if working directly with children) or Annex A (if not working directly with children) of KCSIE 2025
- All staff have completed their Prevent training and this is recorded
- Keep records of online staff training and the signing requirements for policy reading

The Personnel Lead will ensure that the school's Single Central Record (SCR) is accurately maintained as an ongoing, accurate and live record and includes any enquiries made regarding disqualification by association.

In relation to induction and training of new staff, the Personnel Lead will ensure that they:

- Use a safeguarding induction checklist and retain this in the front of the staff file, ensuring that staff have copies of all of the policies required
- Have Safeguarding and Child Protection training on induction
- Have read and signed as understood the School's Code of Conduct
- Understand, under legislation, their duty to provide information which would disqualify them by association

4.3 All staff

The school has a duty to ensure that professional behaviour applies to relationships between staff and young people and that all members of staff are clear about what constitutes appropriate behaviour and professional boundaries.

Staff should be explicitly aware of the dangers inherent in:

- working alone with a young person
- physical interventions
- cultural and gender stereotyping
- dealing with sensitive information
- giving to and receiving gifts from students and parents
- contacting young people and parents/carers through private telephones (including text), email or social networking sites.
- disclosing personal details inappropriately
- meeting students / young people outside school hours or school duties
- using their personal phones to take pictures of students, which is not permitted under any circumstance

If a member of staff has reasonable suspicion that a young person is suffering harm and fails to act in accordance with this policy and South Gloucestershire Partnership procedures, this will be viewed as misconduct and appropriate action will be taken by the Headteacher or Governors/Trustees if the concern relates to the Headteacher.

Any member of staff or visitor to the school who receives a disclosure of abuse or suspects that abuse may have occurred **must** report it immediately to the Designated Safeguarding Lead or their Deputy in their absence. **Confidentiality must be maintained and information relating to individual students/families shared with staff on a strictly need to know basis.** It is then the reporting member of staff's personal responsibility to follow up with the Designated Safeguarding Lead.

All members of staff have a duty to attend whole school training on safeguarding children that will enable them to fulfil their responsibilities in respect of safeguarding and child protection effectively; this training will be provided by the chair of Governors every year.

Induction safeguarding training – this is mandatory and will include types of abuse and indicators of abuse, the schools safeguarding systems, key personnel, the early help process, what to do if a child discloses abuse, how to manage confidentiality, what to do if they have concerns about a member of staff, the requirements of recording and reporting, online safety, child exploitation, child-on-child abuse, sexual violence and harassment, upskirting, response to children going missing from education, FGM and Prevent. New staff will complete the safeguarding checklist which will include:

- the child protection and safeguarding policy;
- the behaviour policy;
- Staff code of conduct;
- the role of the designated safeguarding lead (including the identity of the designated safeguarding lead and any deputies)

All new staff will be provided with a copy of:

- The school whistleblowing policy
- The Anti-bullying policy (cyber bullying, prejudice-based and discriminatory bullying)
- The Social, emotional and mental health policy
- Part 1, (if working directly with children) or Annex A (if not working directly with children) of KCSIE 2025

All staff will then receive regular training updates throughout the year in addition to their yearly updated training on the types and signs of abuse and school specific training.

Female genital mutilation (FGM) Whilst all staff must speak to the designated safeguarding lead (or a deputy) with regard to any concerns about female genital mutilation (FGM), there is a statutory duty on teachers. If a teacher, in the course of their work in the profession, discovers that an act of FGM appears to have been carried out on a girl under the age of 18, the teacher must report this to the police. KCSIE 2025 page 162 for further information.

In relation to EYFS and KS1 the Headteacher will:

- Ensure that the relevant staffing ratios are met
- Make sure each child in the Early Years Foundation Stage is assigned a key person
- Where appropriate, inform Ofsted of allegations and actions taken, within the necessary timescale
- Take account of requirements including those related to complaints set out in the safeguarding and welfare section of the statutory framework for the Early Years Foundation Stage (paragraph 3.8 pg 23).
- Note the requirements set out in paragraph 3.75 of the statutory framework for the Early Years Foundation Stage
- Fulfill the requirements for a paediatric first aider to be on site and all schools trips where required . The certificate is for a full course and complies with the criteria set out in Annex A of the Early Years Foundation Stage guidance.

4.4 Whistleblowing

Where there are concerns about the way that safeguarding is carried out in the school, staff should refer to the schools Whistle-blowing Policy.

A whistleblowing disclosure must be about something that affects the general public such as:

- a criminal offence has been committed, is being committed or is likely to be committed
- a legal obligation has been breached
- there has been a miscarriage of justice
- the health or safety of any individual has been endangered

- the environment has been damaged
- information about any of the above has been concealed.

The NSPCC runs a whistleblowing helpline on behalf of the government, the number is **0800 028 0285** or by emailing them directly using help@nspcc.org.uk

4.5 Parents

The school is committed to helping parents/carers understand its responsibility for the welfare of all students.

Parents/carers will be made aware of the school's Safeguarding and Child Protection Policy via the school's website, initial meetings with parents of new students and prospectuses; full copies of the policy will be available upon request to the school.

Where possible, Child Protection concerns should be discussed with parents/carers by the DSL or Deputy DSL, who ideally should seek agreement to making a referral, unless to do so would place the student at increased risk of significant harm; however, a lack of agreement should not stop a referral going ahead.

Where possible the school will endeavour to provide support for parents/carers in meeting their responsibilities for their child's welfare; signposting to other agencies which may support, such as Parenting Courses.

Parents are required to provide the school with two emergency contact numbers.

5) Implementation

5.1 Procedures for Referral

Following a safeguarding concern raised where a child is at risk of immediate harm or has been harmed, the designated safeguarding lead or deputy safeguarding lead will immediately refer to Social Care Teams by telephone:

South Glos. Access and Response (Student's home postcode falls within South Glos)

Telephone number 01454 866000

Bristol Children's Services (Student's home postcodes fall within Bristol)

Telephone number 0117 9038700

All other safeguarding concerns must be reported to the DSL without delay and recorded appropriately on the school system. The DSL will then decide if a referral needs to be made.

If the DSL or DDSL are not available, staff should speak to Kirsty Judge and/or take advice from local children's social care using the numbers above.

The DSL or DDSL will contact the Local Authority Designated Officer (LADO), Jon Goddard on 01454 868508 or lado@southglos.gov.uk in relation to allegations against a member of staff

It is important to remember that options in response to staff raising a concern may not lead to a referral to ART being made. This would always follow a discussion with the DSL. Other options may include:

- Managing the support for the student internally through our own integrated student support processes
- An early help assessment, which staff might be required to help with or lead on
- A referral to a statutory service e.g. CYPMHS

If in exceptional circumstances, the DSL or Deputy DSL are not available, this should not delay appropriate action being taken by the member of staff.

If requested, the telephone referral to the Social Care Team will be confirmed as a written referral within a maximum of 24 hours, with a copy placed on the student's Child protection record maintained by the Designated Safeguarding Lead. Essential information will include student's name, address, date of birth, family composition, and reason for referral, name of person receiving the referral and any advice given.

5.2 Record Keeping

Any member of staff receiving a disclosure of abuse, or noticing possible abuse, must make an accurate, clear record as soon as possible noting what was said or seen, putting the event into context, and giving the date, time and location. All records must be dated and signed and discussed with the Designated Safeguarding Lead or Deputy Safeguarding Lead.

Records should include:

- a clear and comprehensive summary of the concern
- details of how the concern was followed up and resolved, and
- a note of any action taken, decisions reached and the outcome.

Written records of concerns about students should be kept, even where there is no need to make an immediate referral. Where concerns do not meet the threshold for a referral to Social Care, consideration should be given to the appropriateness of completing an Early Help assessment.

In line with the South Gloucestershire CSE strategy, the DSL and Deputy DSL will be alert for any indicators that a child is at risk of child sexual exploitation and, if required, will complete an Exploitation Identification Tool and pass concerns directly to Access and Response.

All records relating to child protection concerns will be kept in a secure online space and will remain confidential. They do not form part of the student's educational records and should be retained separately and are not required to be disclosed to parents/carers, except by agreement with the school.

A chronology will be kept of individual student concerns which is reviewed and updated whenever a new concern is raised, noting any action.

Child protection records must be kept for a minimum of 25 years after the student has reached the end of compulsory education; the school will also retain all additional safeguarding records for 25 years in a confidential archive separate from a students' individual file.

DSL and SLT undertake regular monitoring and reviews of records as this can reveal patterns or emerging concerns which could indicate a safeguarding concern.

5.3 Managing a Disclosure

It is not easy to give precise guidance especially as some children may not feel ready or know how to tell of abuse or may not recognise their experiences as harmful. Staff need to be alert and have a professional curiosity. The School has a culture of openness where pupils feel listened to. The following points will help staff who are disclosed to:

General Points

- Show acceptance of what the child says (however unlikely the story may sound)
- Keep calm
- Look at the child directly
- Be honest
- Tell the child you will need to let someone else know – don't promise confidentiality
- Even when a child has broken a rule, they are not to blame for the abuse
- Be aware that the child may have been threatened or bribed not to tell
- Never push for information. If the child decides not to tell you after all, then accept that and let them know that you are always ready to listen
- A victim should never be given the impression that they are creating a problem by reporting abuse. Nor should they ever be made to feel ashamed for making a report.

Helpful things you may say or show

- "You have done the right thing in telling me"
- Show acceptance of what the child says
- "Thank you for telling me"
- "It's not your fault"
- "I will help you"

Do not say

- "Why didn't you tell anyone before"
- "I can't believe it!"
- "Are you sure this is true?"

- “Why? How? When? Who? Where?”
- Never make false promises
- Never make statements such as “ I am shocked, don’t tell anyone else”

Concluding

- Pupils (victims and perpetrators (in the case of child-on-child abuse)) will be given continued support through our pastoral team for as long as necessary and in conjunction with any outside agencies.
- Again, reassure the child what you are going to do next and that you will let them know what happens (you might have to consider referring to the *Children, Schools and Families department* or the Police to prevent a child or young person returning home if you consider them to be seriously at risk of further abuse)
- Contact the person in the school responsible for coordinating child protection concerns or contact the *Children, Schools and Families department/Police/NSPCC*
- Consider your own feelings and seek pastoral support if needed

6) Allegations made against staff

Part 4 of KCSIE 2025 sets out the responsibility of schools in relation to managing allegations against staff. This guidance will be followed where it is alleged that anyone working in the school that provides education for children under 18 years of age, including supply teachers, volunteers and contractors has:

- Behaved in a way that has harmed a child, or may have harmed a child
- Possibly committed a criminal offence against or related to a child
- Behaved towards a child or children in a way that indicates that he or she would pose a risk of harm to children
- Behaved or may have behaved in a way that indicates they may not be suitable to work with children

Then the allegation will be dealt with in accordance with national guidance and agreements, as implemented locally by the South Gloucestershire Children's Partnership

Allegations against a member of staff should be brought to the attention of the Headteacher, unless the Headteacher is the subject of the allegation. In this situation the allegation should be referred to the Governor responsible for Safeguarding. They will contact the police in cases of serious harm and the contact Jon Goddard (LADO) without delay.

An allegation must not be discussed with the alleged perpetrators or other members of staff / governors, unless advised to do so by the LADO. All concerns against a member of staff must be reported without delay.

The school is required to inform the Disclosure and Barring Service as soon as investigations are completed, of any person, whether employed, contracted, a volunteer, or a student, whose services are no longer used because he or she is considered unsuitable to work with children.

The address for referrals is DBS customer services, PO Box 3961, Royal Wootton Bassett SN4 4HF - Telephone 03000 200 190. Failure by the school to make such a report could constitute an offence, leading to the school being removed from the DfE's register of Independent Schools (legislation from The Education (Provision of Information by Independent Schools) (England) Regulations 2003. Compromise Agreements cannot apply in this connection.

The school will also make a referral to the Disclosure and Barring Service (DBS) if a person in regulated activity has been dismissed or removed due to safeguarding concerns or would have been had they not resigned.

Schools and colleges have a legal duty to refer to the DBS anyone who has harmed, or poses a risk of harm, to a child or vulnerable adult where:

- the harm test is satisfied in respect of that individual;
- the individual has received a caution or conviction for a relevant offence, or if there is reason to believe that the individual has committed a listed relevant offence; and
- the individual has been removed from working (paid or unpaid) in regulated activity or would have been removed had they not left.

A person satisfies the harm test if they may harm a child or vulnerable adult or put them at risk of harm. It is something a person may do to cause harm or pose a risk of harm to a child or vulnerable adult. (See <https://www.gov.uk/guidance/making-barring-referrals-to-the-dbs#what-is-the-harm-test>).

The Teaching Regulation Agency (TRA) will also be informed if staff are sacked due to safeguarding issues. <https://teacherservices.education.gov.uk/>

Regard must be given to the section 'Allegations of Abuse Made Against Teachers and Other Staff Including Supply Teachers and Volunteers', in the document "Keeping Children Safe in Education' (2025)'. This should be used in respect of all cases in which it is alleged that a teacher or member of staff (including volunteers) in a school or college that provides education for children under 18 years of age has:

- Behaved in a way that has harmed a child, or may have harmed a child;
- Possibly committed a criminal offence against or related to a child; or
- Behaved towards a child or children in a way that indicates he or she **may** pose a risk of harm to children."

These procedures are also included in staff training.

6.1 Physical Contact, restraint and the use of reasonable force

Members of staff may have to use physical interventions with children; this should only be done where:

- It is necessary to protect the child, or another person, from immediate danger.
- Individual plans for vulnerable children to reduce risk, such as those with SEN and disabilities are in place
- Use of reasonable force applies to students with or without SEN

All physical contact and or restraint is accurately recorded in the physical contact or restraint log on the Safeguarding drive in the low level concerns folder.

6.2 Photographing Children in school

We will not allow images of students to be used on school websites, publicity, or press releases, without express permission from the parent/carer, and if we do obtain such permission, we will not identify individual children by full name.

The school cannot however be held accountable for photographs or video footage taken by parents/carers or members of the public at school functions. Parents will be asked not to share photos or videos beyond their immediate family circle.

Photography will be used across the school as a tool to support assessment and to provide evidence of, and celebration of, curriculum coverage. However, staff will not use personal cameras or mobile phones to take photographs of children; all photographs will be taken on school cameras or devices.

Staff can bring their mobile devices into school, but these must be used as per the acceptable use policy.

6.3 Low-level concerns

Refer to the Low-level Safeguarding Concerns Policy

7) Monitoring & Review

The GB are responsible for overseeing the implementation of this policy, monitoring and evaluating its impact; they will also review it every year, or sooner if appropriate.

The Designated Safeguarding Lead will, on behalf of the Headteacher, complete an annual audit of Child Protection and Safeguarding to evaluate the effectiveness of the school's procedures.

Ratification

Approved by the GB

Publication

This policy can be found on the school website, and the Staff Shared drive in school

Review

Annual Audits produced by the Designated Safeguarding Lead for start of Autumn term each year.

Immanuel Christian School Safeguarding Policy – version 13

Adopted by the Governors on 19/11/2015.

Reviewed and adopted – 26/09/2016

Reviewed and adopted – 20/06/2017

Reviewed and adopted – 09/12/2017

Revised and adopted – 25/09/2018

Revised and adopted – 04/09/2019

Revised and adopted – 03/09/2020

Revised and adopted – 03/09/2021

Revised and adopted – 01/09/2022

Revised and adopted – 01/09/2023

Revised and adopted – 01/09/2024

Revised and adopted – 01/09/2025

Revised and adopted – 16/02/2026

Appendix A: Reporting of a concern flowchart

Designated Safeguarding Lead: Andy Joy
 Deputy Safeguarding Lead: Joanna Gulliford
 Local Authority Designated Officer:
 Jon Goddard – 01454 868508 – please note this is a professional facing role and therefore the contact needs to come from the Headteacher or DSL at school

Discuss concern with the DSL or DDSL

Email summary for the student’s record as soon as possible

DSL/DDSL to review concerns and makes a decision about next steps

Decision made to monitor the concerns (Add decision to student file)

MONITOR

Teachers asked to monitor child and feedback to the DSL/DDSL within an agreed timescale

Decision made to discuss the concern with the parents/carers

DISCUSS

After discussion with parents or carers DSL/DDSL decides to discuss further with parents, monitor or refer to ART

Decision made to refer the concern to ART

REFER

DSL/DDSL to complete and send referral to ART and copy on students CP file

RECORD

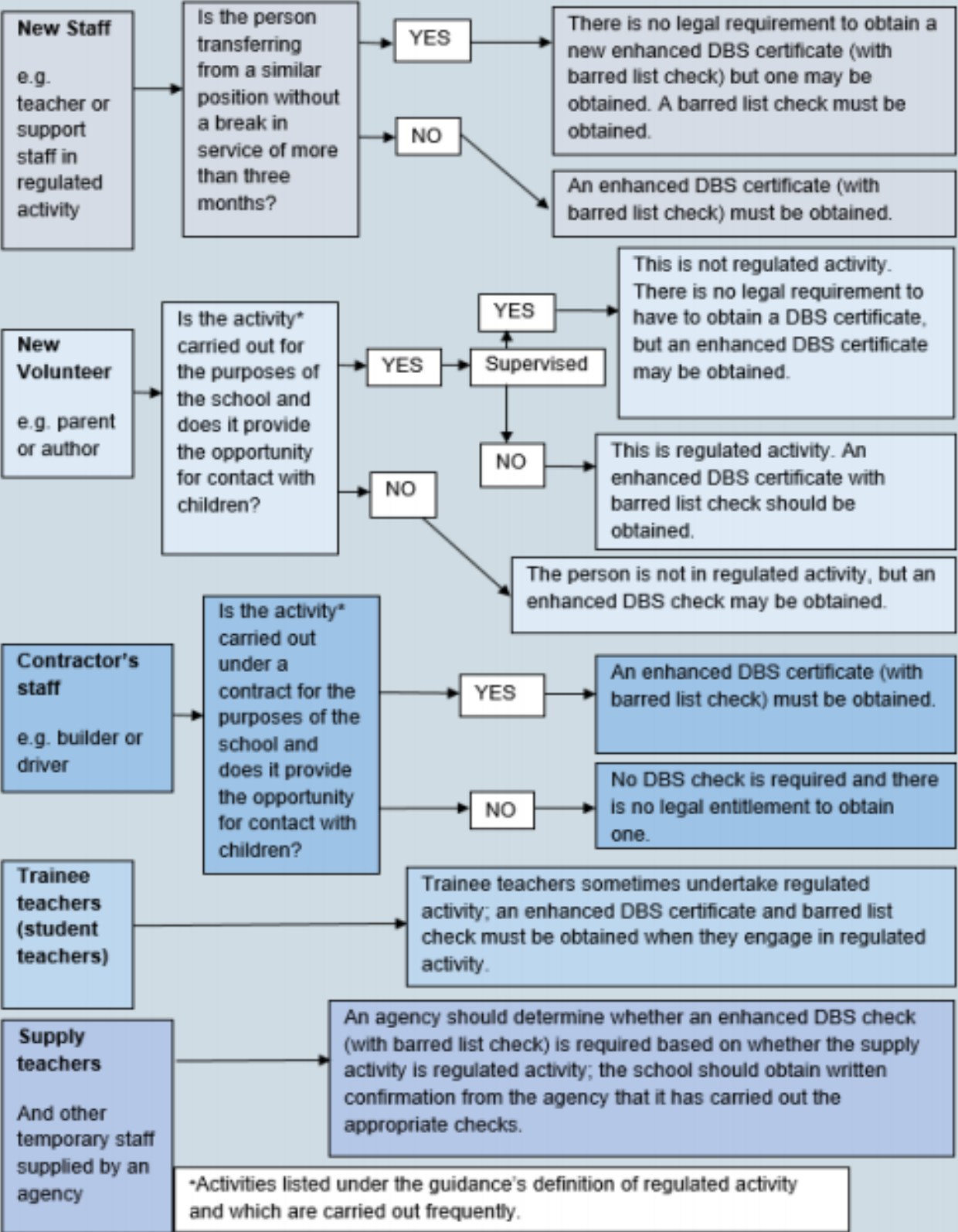
DSL/DDSL to save information securely

In exceptional circumstances anyone can report concerns directly to ART
 NSPCC Whistleblowing Helpline 0800 028 0285

ART contact number: 01454 866000
 accessandresponse@southglos.gov.uk
 Prevent/Channel South Lead:
 01454 863844
 preventproject@southglos.gov.uk

Appendix B: Disclosure and Barring Service Criminal Record and Barring Checks

FLOWCHART OF DISCLOSURE AND BARRING SERVICE CRIMINAL RECORD CHECKS AND BARRED LIST CHECKS



Appendix C: LADO Process flowchart

LADO THRESHOLD (Working Together to Safeguard Children 2023 & KCSIE 2025)

- Behaved in a way that has harmed/may have harmed a child
- Possibly committed a criminal offence against or related to a child
- Behaved towards a child or children in a way that indicates they may pose a risk of harm to children (Working Together to Safeguard Children 2023)
- Behaved or may have behaved in a way that indicates they may not be suitable to work with children

